



ACEHOMESUPPLIES.COM

YOUR CANADIAN LEADER IN LUXURY HOME SUPPLIES





ALBA Double Sliding Door

Double sliding shower door (1 Set 3 Boxes)

Double side coating

10mm clear glass

SKU	PART #	SIZE	STYLE	FINISH
#0132209	AL-1-4875-11-40	(46"-48") X75"	DS	CH
#0132210	AL-1-4875-33-40	(46"-48") X75"	DS	MB
#0132335	AL-1-4875-25-40	(46"-48") X75"	DS	BN
#0132211	AL-1-6075-11-40	(58"-60") x75"	DS	CH
#0132212	AL-1-6075-33-40	(58"-60") x75"	DS	MB
#0132330	AL-1-6075-25-40	(58"-60") x75"	DS	BN



ALBA Tub Door

Double sliding shower door (1 Set 3 Boxes)

Double side coating

10mm clear glass

SKU	PART #	SIZE	STYLE	FINISH
#0132213	AL-1-6060-11-40	(58"-60") x60"	TUB	CH
#0132214	AL-1-6060-33-40	(58"-60") x60"	TUB	MB
#0132331	AL-1-6060-25-40	(58"-60") x60"	TUB	BN



ALBA One Fixed, One Sliding

Inline sliding door with fixed panel

1set/ 3boxes

Only 12mm overlap on the glass panels with door closed on the 60 inch opening

(58"-60") X 84" - 4pc Dia. 70mm roller

10mm clear glass

SKU	PART #	SIZE	STYLE	FINISH
#0132215	AL-2-6084-11-40	(58"-60") x84"	1F1S	CH
#0132216	AL-2-6084-33-40	(58"-60") x84"	1F1S	MB
#0132336	AL-2-6084-25-40	(58"-60") x84"	1F1S	BN



ALBA Return Panel

Return panel to match Alba inline door
 Installed as a corner shower enclosure
 36" x 84"
 10mm

SKU	PART #	SIZE	STYLE	FINISH
#0132217	AL-2R-3684-40	(36"x84")	RP	NA



BOW One Fixed, One Sliding

Inline sliding door with fixed panel (1set/3boxes)
 Only 12mm panel overlap with doors closed
 2pc Dia. 55mm roller
 10mm clear glass.

SKU	PART #	SIZE	STYLE	FINISH
#0132225	BO-1-4880-11-40	(46"-48")x80"	1F1S	CH
#0132226	BO-1-4880-33-40	(46"-48")x80"	1F1S	MB
#0132337	BO-1-4880-25-40	(46"-48")x80"	1F1S	BN
#0132227	BO-1-6080-11-40	(58"-60")x80"	1F1S	CH
#0132228	BO-1-6080-33-40	(58"-60")x80"	1F1S	MB
#0132325	BO-1-6080-25-40	(58"-60")x80"	1F1S	BN
#0132318	BO-1-7280-11-40	(70"-72")x80"	1F1S	CH
#0132324	BO-1-7280-33-40	(70"-72")x80"	1F1S	MB
#0132333	BO-1-7280-25-40	(70"-72")x80"	1F1S	BN



BOW Tub Door

Inline sliding tub door with fixed panel (1set/3boxes)
 Only 12mm panel overlap with doors closed
 2pc Dia. 55mm roller
 10mm clear glass.

SKU	PART #	SIZE	STYLE	FINISH
#0132350	BO-1-6060-11-40	(58"-60")x60"	TUB	CH
#0132351	BO-1-6060-33-40	(58"-60")x60"	TUB	MB
#0132352	BO-1-6060-25-40	(58"-60")x60"	TUB	BN



DELLA One Fixed, One Sliding

Inline sliding door with fixed panel (1set/2boxes)
 1 inch overlap on the glass panels w/ door closed
 8mm clear glass

SKU	PART #	SIZE	STYLE	FINISH
#0132218	DE-1-4775-11-40	(45"-47") X75"	1F1S	CH
#0132219	DE-1-4775-33-40	(45"-47") X75"	1F1S	MB
#0132338	DE-1-4775-25-40	(45"-47") X75"	1F1S	BN
#0132220	DE-1-5875-11-40	(56"-58") X75"	1F1S	CH
#0132221	DE-1-5875-33-40	(56"-58") X75"	1F1S	MB
#0132333	DE-1-5875-25-40	(56"-58") X75"	1F1S	BN



DELLA Tub Door

Inline sliding door with fixed panel (1set/2boxes)
 1 inch overlap on the glass panels w/ door closed
 8mm clear glass

SKU	PART #	SIZE	STYLE	FINISH
#0132222	DE-1-5860-11-40	(56"-58") X60"	TUB	CH
#0132223	DE-1-5860-33-40	(56"-58") X60"	TUB	MB
#0132249	DE-1-5860-25-40	(56"-58") X60"	TUB	BN



BOW Return Panel

Return panel to match Bow inline door
 To be installed as a corner shower enclosure
 36" x 80"
 10mm clear glass

SKU	PART #	SIZE	STYLE	FINISH
#0132229	BO-1R-3680-11-40	(36"x 80")	RP	NA



DELLA Return Panel

Return panel to match Della inline door
To be installed as a corner shower enclosure
(36" x 75")
8mm clear glass

SKU	PART #	SIZE	STYLE	FINISH
#0132224	DE-1R-3675-11-40	(36"x75")	RP	NA



DELLA Shower Enclosure

Corner enclosure
(36" x 36") x 75"
8mm clear glass
Match with DELLA shower base ABC36

SKU	PART #	SIZE	STYLE	FINISH
#0132241	DE-1-3636-75-33-40	36"x36" x75"	SE	CH
#0132242	DE-1-3636-75-11-40	36"x36" x75"	SE	MB



CUSTOM Pivot Door

Door panel: 27 3/16"X79 9/16". 10mm
Fixed Panel: 17 5/8"X79 5/8". 10mm
Fixed Panel: 28 5/8"X79 5/8". 10mm

SKU	PART #	SIZE	STYLE	FINISH
#0132289	CU-1-D-2879	(27-3/16") x 79 9/16"	PIVOT	NA
#0132290	CU-2-P-1879-46	(17-5/8") x 79 5/8"	FIXED	NA
#0132291	CU-2-P-2879-58	(28 7/8") x 79 5/8"	FIXED	NA



CUSTOM Door Return Panel

Return panel to match Custom Door
 To be installed as a corner shower enclosure
 (34-35") x 80"
 (33-1/2") x 80"
 10mm clear glass

SKU	PART #	SIZE	STYLE	FINISH
#0132319	CU-3-RP-3480	(34-35") x 80"	RP	NA



ELBOW Shield Door

Shield doors use L-shape support bar
 1set/2boxes
 10mm clear glass

SKU	PART #	SIZE	STYLE	FINISH
#0132239	EL-1-2816-80-11-40	(28"x16") x80"	SD	CH
#0132240	EL-1-2816-80-33-40	(28"x16") x80"	SD	MB
#0132323	EL-1-2816-80-25-40	(28"x16") x80"	SD	BN



ELBOW Tub Shield Door

Shield doors use L-shape support bar
 1set/2boxes
 (28"+16") x 60".
 10mm clear glass

SKU	PART #	SIZE	STYLE	FINISH
#0132237	EL-1-2816-60-11-40	(28"x16") x60"	TUB	CH
#0132238	EL-1-2816-60-33-40	(28"x16") x60"	TUB	MB
#0132339	EL-1-2816-60-25-40	(28"x16") x60"	TUB	BN



CADOMIN Double Sliding 6mm

Double sliding shower door
 1set/2 boxes
 6mm clear glass
 Towel bar & Square handle

SKU	PART #	SIZE	STYLE	FINISH
#0132313	CA-1-4470-11-40	(42"-44")x70	DS	CH
#0132329	CA-1-4470-33-40	(42"-44")x70	DS	MB
#0132234	CA-1-5670-11-40	(54"-56) x70"	DS	CH
#0132302	CA-1-5670-33-40	(54"-56) x70"	DS	MB



CADOMIN Tub Door 6mm

Double sliding shower door
 1set/2 boxes
 (54"-56") x 56"
 6mm clear glass
 Towel bar & square handle

SKU	PART #	SIZE	STYLE	FINISH
#0132230	CA-1-5656-11-40	(54"-56)x56"	TUB	CH
#0132231	CA-1-5656-33-40	(54"-56)x56"	TUB	MB



CADOMIN Double Sliding 8mm

Double sliding shower door
 1set/2 boxes
 8mm clear glass
 Towel bar & Square handle

SKU	PART #	SIZE	STYLE	FINISH
#0132232	CA-1-6070-11-40	(58"-60)x70"	DS	CH
#0132233	CA-1-6070-33-40	(58"-60)x70"	DS	MB



CADOMIN Tub Door 8mm

Double sliding shower door
 1set/2 boxes
 (58" -60) x 56"
 8mm clear glass
 Towel bar & square handle

SKU	PART #	SIZE	STYLE	FINISH
#0132235	CA-1-6056-11-40	(58"-60)x56"	TUB	CH
#0132236	CA-1-6056-33-41	(58"-60)x56"	TUB	MB



AGNES One Fixed, One Sliding

One fixed one sliding shower door
 Left or right hand entrance
 1set/box
 6mm clear glass

SKU	PART #	SIZE	STYLE	FINISH
#0132295	AG-5472-11-40	(52-54")x72"	1F1S	CH
#0132296	AG-5672-11-40	(54-56")x72"	1F1S	CH



AGNES Neo Angle

Neo Angle shower enclosure
 (match shower base ABN36-01)
 Stainless Steel Framed
 36"x36"x72"
 6mm clear glass

SKU	PART #	SIZE	STYLE	FINISH
#0132300	AG-3636-11-40	(36"x36)"x72"	SE	CH
#0132299	AG-3636-33-40	(36"x36)"x72"	SE	MB



HALF MOON Shower Enclosure

Curved shower enclosure

(36"x36")x75"- 8mm clear glass

1set/box

Match with Half Moon shower base HM-AC-3636-3-1/2

SKU	PART #	SIZE	STYLE	FINISH
#0132245	HM-3636-75-11-40	36"x36"x75"	SE	CH



LONA Swing Shower Door

Swing Shower Door

(8mm) clear glass

1set/box

Chrome or Matte Black finish

SKU	PART #	SIZE	STYLE	FINISH
#0132297	LO-30-3672-11-40	(30-36)x72"	PIVOT	CH
#0132334	LO-30-3672-33-40	(30-36)x72"	PIVOT	MB
#0132298	LO-36-4272-11-40	(36-42)x72"	PIVOT	CH



LONA-2 Swing Shower Door

Swing Shower Door

(6mm) clear glass

1set/box

Chrome finish

SKU	PART #	SIZE	STYLE	FINISH
#0132314	LO-1-2325-72-11-40	23.5"-25 1/2" x 72"	PIVOT	CH
#0132315	LO-1-2527-72-11-40	25.5"-27 1/2" x 72"	PIVOT	CH
#0132316	LO-1-2729-72-11-40	27.5"-29 1/2" x 72"	PIVOT	CH



MARLOW Bath Tub

Alcove skirted bathtub
 32"x60"x21"
 Left or Right Side Drain

SKU	PART #	SIZE	DRAIN
#0132257	MA-B-3260-R	32"x60"x21"	Right Drain
#0132258	MA-B-3260-L	32"x60"x21"	Left Drain



COVE Bath Tub (Round)

Free standing bath tub
 1500X750X580 (59"x30"x22")
 Drainage & overflow without faucet
 Match with "UPPER" faucet

SKU	PART #	SIZE	DRAIN
#0132306	CO-B-6023-C-R	59x30x22"	Center Drain



COVE Bath Tub (Square)

Free standing bath tub
 1700X800X590 (67"x32"x23")
 Drainage & overflow without faucet
 Match with "UPPER" faucet

SKU	PART #	SIZE	DRAIN
#0132307	CO-B-6023-C-SQ	67x32x23"	Center Drain



MIETTE Walk in Tub

Walk-in tub.

53"x30"x41"

Left or Right Side Tub Door Entrance

SKU	PART #	SIZE	STYLE
#0132259	MI-5330-41-R	53"x30"x41"	Right Entrance
#0132260	MI-5330-41-L	53"x30"x41"	Left Entrance



ALBA Shower Base

36"×48"×3 1/2" (1set/box)

36"×60"×3 1/2" (1set/box)

Left or Right Drain

Nonslip Surface

SKU	PART #	SIZE	STYLE
#132280	AL-AC-3648-L	36"×48"×3 1/2"	Left Drain
#132281	AL-AC3648-R	36"×48"×3 1/2"	Right Drain
#0132251	AL-AC-3660-L	36"×60"×3 1/2"	Left Drain
#0132252	AL-AC3660-R	36"×60"×3 1/2"	Right Drain



DELLA Shower Base

30"×60"×3 1/2" (L, R Drain) (1set/box)

32"×60"×4" (L, R Drain) (1set/box)

36"×48"×3.5", 36"×60"×4" (Center Drain) (1set/box)

SKU	PART #	SIZE	STYLE
#0132303	DE-AC-3060-L	30" X60" X 3 1/2"	Left Drain
#0132304	DE-AC-3060-R	30" X60" X 3 1/2"	Right Drain
#0132248	DE-AC-3260-L	32"×60"×4"	Left Drain
#0132249	DE-AC-3260-R	32"×60"×4"	Right Drain
#0132312	DE-AC-3648-C	36"×48"×3.5"	Center Drain
#0132250	DE-AC-3660-C	36"×60"×4"	Center Drain



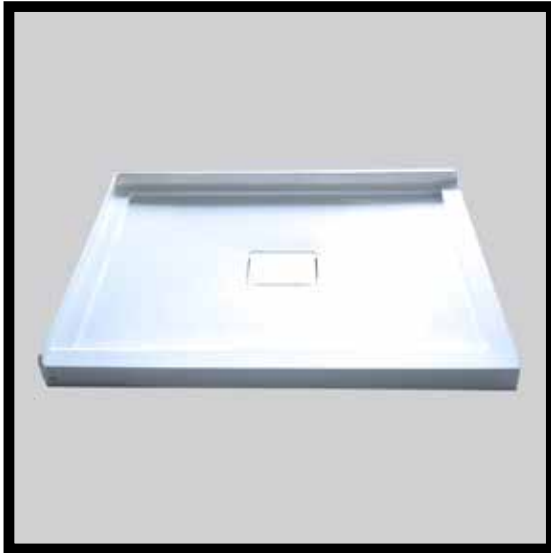
DELLA Shower Enclosure Base

36"×36"×3 1/2" (1set/box)

Can be Positioned for Left or Right Drain

Nonslip Surface

SKU	PART #	SIZE	STYLE
#0132246	DE-AC-3636-3 1/2	36" x 36" x 3 1/2"	Enclosure Base



ISLA Shower Base

(36"X48") x 4 1/8"

(36"X60") x 4 1/8"

White, Flat surface

Left or Right Side Flange

SKU	PART #	SIZE	STYLE
#0132253	IS-AC-3648-L	36"X48"X4 1/8"	Left Flange
#0132254	IS-AC-3648-R	36"X48"X4 1/8"	Right Flange
#0132255	IS-AC-3660-L	36"X60"X4 1/8"	Left Flange
#0132256	IS-AC-3660-R	36"X60"X4 1/8"	Right Flange



HALF MOON Shower Base

36" x 36" x 3 1/2"

Can be Positioned for Left or Right Drain

White

Nonslip Surface

SKU	PART #	SIZE	STYLE
#0132247	HM-AC-3636-3 1/2	36" x 36" x 3 1/2"	Enclosure Base



AGNES Neo Shower Base

Neo Angle Shower Base

36"x36" X 3 1/2" (Center Drain) (1set/box)

Nonslip Surface

SKU	PART #	SIZE	STYLE
#0132305	AG-AC-3636-C	36"x36"x3 1/2"	Enclosure Base



HINKA Bathroom Faucet

Material: Brass
 Handle: Zinc
 Valve: Ceramic cartridge cup
 Aerator: abs, 1.5GPM@60PSI
 Hose: 304 Stainless steel hose
 100% pressure system tested
 CUPC approved
 Pop up drain

SKU	PART #	DISCRIPTION	FINISH
#0132265	HINKA-CHR	Faucet	CH
#0132266	HINKA-MB	Faucet	MB



SPRUCE Bathroom Faucet

Material: solid brass
 Handle: zinc alloy
 Valve: Ceramic cartridge, cupc
 Aerator: abs, 1.5GPM@60PSI
 Hose: 304 Stainless steel hose
 100% pressure system tested
 CUPC approved
 Pop up drain

SKU	PART #	DISCRIPTION	FINISH
#0132272	SPRUCE-CHR	Faucet	CH



INVER Bathroom Faucet

Material: Brass
 Handle: Zinc
 Valve: Ceramic cartridge, cupc
 Aerator: abs, 1.5GPM@60PSI
 Hose: 304 Stainless steel hose
 100% pressure system tested
 CUPC approved
 Pop up drain
 Chrome or Gun Metal Black finish

SKU	PART #	DISCRIPTION	FINISH
#0132268	INVER-CHR	Faucet	CH
#0132269	INVER-GB	Faucet	GB



BONA Bathroom Faucet

Material: Solid brass
 Handle: Zinc alloy
 Valve: Ceramic cartridge,cupc, Sedal
 Aerator: abs, 1.5GPM@60PSI
 Hose: 304 Stainless steel hose
 100% pressure system tested
 CUPC approved
 Pop up drain

SKU	PART #	DISCRIPTION	FINISH
#0132270	BONA-CHR	Faucet	CH



MYRA Bathroom Faucet

Material: Solid brass
 Handle: Zinc alloy
 Valve: Ceramic cartridge,cupc
 Aerator: abs, 1.5GPM@60PSI
 Hose: 304 Stainless steel hose
 100% pressure system tested
 CUPC approved
 Pop up drain

SKU	PART #	DISCRIPTION	FINISH
#0132271	MYRA-CHR	Faucet	CH



ABER Bathroom Faucet

Material: Brass
 Handle: Zinc
 Valve: Ceramic cartridge,cupc
 Aerator: abs, 1.5GPM@60PSI
 Hose: 304 Stainless steel hose
 100% pressure system tested
 CUPC approved
 Pop up drain

SKU	PART #	DISCRIPTION	FINISH
#0132267	ABER-CHR	Faucet	CH



DRIN Bathroom Faucet

Material: Brass
 Handle: Zinc Alloy
 Valve: Brass cartridge
 Aerator: abs, 1.5GPM@60PSI
 Hose: 304 Stainless steel hose
 100% pressure system tested
 CUPC approved
 Pop up drain

SKU	PART #	DISCRIPTION	FINISH
#0132273	DRIN-CHR	Faucet	CH



EDESA Bathroom Faucet

Material: Solid brass
 Handle: Zinc alloy
 Valve: Ceramic cartridge,cupc, Sedal
 Aerator: abs, 1.5GPM@60PSI
 Hose: 304 Stainless steel hose
 100% pressure system tested
 CUPC approved
 Pop up drain

SKU	PART #	DISCRIPTION	FINISH
#0132274	EDESA-CHR	Faucet	CH



UPPER Bathroom Faucet - R

Material: Brass
 Handle: Zinc
 Valve: Ceramic cartridge cup
 Aerator: abs, 1.5GPM@60PSI
 Hose: 304 Stainless steel hose
 100% pressure system tested
 CUPC approved

SKU	PART #	DISCRIPTION	FINISH
#0132308	UPPER-R-CHR	Faucet	CH
#0132309	UPPER-R-MB	Faucet	MB
#0132336	UPPER-R-BN	Faucet	BN



UPPER Bathroom Faucet - SQ

Material: solid brass
 Handle: zinc alloy
 Valve: Ceramic cartridge, cupc
 Aerator: abs, 1.5GPM@60PSI
 Hose: 304 Stainless steel hose
 100% pressure system tested
 CUPC approved

SKU	PART #	DISCRIPTION	FINISH
#0132310	UPPER-SQ-CHR	Faucet	CH
#0132311	UPPER-SQ-MB	Faucet	MB
#0132327	UPPER-SQ-BN	Faucet	BN



CADENZA Shelves

Triangular shaped shelves
 Nice corner fit
 Concealed screws for a flawless appearance
 Tempered glass for a sturdier composition

SKU	PART #	DISCRIPTION	FINISH
#0132279	CADENZA	Shelf	CH



WAPTA Kitchen Faucet

Ceramic valve cartridge
 Solid brass construction
 Pull out spray head
 100% pressure system tested

SKU	PART #	DISCRIPTION	FINISH
#0132275	WAPTA-BN	Faucet	BN
#0132276	WAPTA-MB	Faucet	MB



KISDON Kitchen Faucet

Ceramic valve cartridge
 Solid brass construction
 Pull out spray head
 100% pressure system tested

SKU	PART #	DISCRIPTION	FINISH
#0132277	KISDON-CHR	Faucet	CH
#0132278	KISDON-MB	Faucet	BN



LONE Kitchen Sink

R10 kitchen sink
 single undermount
 ss304 1.05mm
 Brushed Nickel Finish

SKU	PART #	DISCRIPTION	SIZE	FINISH
#0132264	LO-3118-BN	Sink	31"x18"x9"	BN
#0132322	LO-1618-BN	Sink	16"x18"x9"	BN



LARA Double Kitchen Sink

R10 handmade sink
Double undermount
ss304 1.05mm
Brushed Nickel Finish
31"x18"x9"

SKU	PART #	DISCRIPTION	SIZE	FINISH
#0132321	LARA-3118-9-BN	Sink	31"x18"x9"	BN



BARRIER Barn Door Kit

Barn door style hardware kit

For 10mm and 12mm glass

1set/box

(Glass not included)

SKU	PART #	STYLE	FINISH
#0132261	BA-3036-11	BD	CH
#0132263	BA-3036-33	BD	MB
#0132262	BA-3036-25	BD	BN



BULLET Glass Clamps

Glass spigots are useful in creating a modern glass balustrade for your balcony, deck or pool

SS316 Satin stainless steel is extremely resistant to corrosion and has particularly high resistance to pitting and crevice corrosion in chloride environments

Chrome or Matte Black finish (Sold individually)

SKU	PART #	STYLE	FINISH
#0132301	BULLET-SS	RAILING	SS
#0132340	BULLET-MB	RAILING	MB



GLASS CONNECTORS 10mm

- SS 316 Glass to Glass Connector / Rubber Inlay 10mm

- 90 Degree Glass Connector / Rubber Inlay 10mm

- Wall to Glass Clamp / Rubber Inlay for 10mm

* Brushed Nickel or Matte Black Finish

SKU	PART #	STYLE	FINISH
#0132343	GLASS-TO-GLASS-BN	CONNECTOR	BN
#0132344	GLASS-TO-GLASS-MB	CONNECTOR	MB
#0132345	GLASS-CONNECTOR-90-BN	CONNECTOR	BN
#0132346	GLASS-CONNECTOR-90-MB	CONNECTOR	MB
#0132347	CLAMP-WALL-TO-GLASS-BN	CONNECTOR	BN
#0132348	CLAMP-WALL-TO-GLASS-MB	CONNECTOR	MB



BOW RP Hardware Kit

Wall jamb
 Mounting bracket
 Gasket

SKU	PART #	STYLE	FINISH
#0132243	BO-RP-H-CHR	RP KIT	CH
#0132244	BO-RP-H-MB	RP KIT	MB
#0132341	BO-RP-H-BN	RP KIT	BN



DELLA RP Hardware Kit

Wall jamb
 Mounting bracket
 Gasket

SKU	PART #	STYLE	FINISH
#0132317	DE-RP-H-CHR	RP KIT	CH
#0132328	DE-RP-H-MB	RP KIT	MB
#0132342	DE-RP-H-BN	RP KIT	BN



CUSTOM Hardware Kit

Hardware Kit Includes:

- 1xWall Jamb,
- 1xBottom Gasket,
- 1xGlass to Glass Gasket,
- 1xHinge Side Gasket,
- 1x6" Handle,
- 2xHinges,
- 1xBottom U-Channel
- 2x8*6mm hard block
- 2x 6*3.2mm block
- 2x 6*1mm block

SKU	PART #	STYLE	FINISH
#0132292	CU-3-H-46/58-CHR	HW KIT	CH
#0132293	CU-3-H-46/58-MB	HW KIT	MB
#0132294	CU-3-H-46/58-BN	HW KIT	BN



SQUEEGEE

Stainless steel shower squeegee
 Hook to hang inside shower for easy access

SKU	PART #	STYLE	FINISH
#0132320	SQUEEGEE	NA	SS



UNIVERSAL Drill Bits

Carbide tipped Universal Drill Bit
 Good for Drilling Ceramic Tile, Wood, Porcelain, Mirror, Plastic, Marble Wall
 High-Quality Tungsten Carbide prevents cracking and provides for longer life

SKU	PART #	SIZE	STYLE
#0132282	DBU-3/16	3/16"	UNV
#0132283	DBU-1/4	1/4"	UNV
#0132284	DBU-5/16	5/16"	UNV